



# MAVIC 2 ENTERPRISE SERIES

# Specifications-



Zoom Camera



Dual Camera



OcuSync 2.0



Modular Accessories



Password Protection



DJI AirSense



## MAVIC 2 ENTERPRISE DUAL

### Visible & Thermal Imagery

- Integrated Radiometric FLIR® Thermal Sensor
- Adjustable Parameters For Emissivity & Reflective Surfaces
- Multiple Display Modes: FLIR MSX™, Infrared & Visible



## MAVIC 2 ENTERPRISE

### Powerful Zoom Capability

- 12 MP 1/2.3" CMOS Sensor
- Dynamic Zoom: 2x Optical 3x Digital Zoom Capability
- Post Analysis Metadata: GPS Timestamping



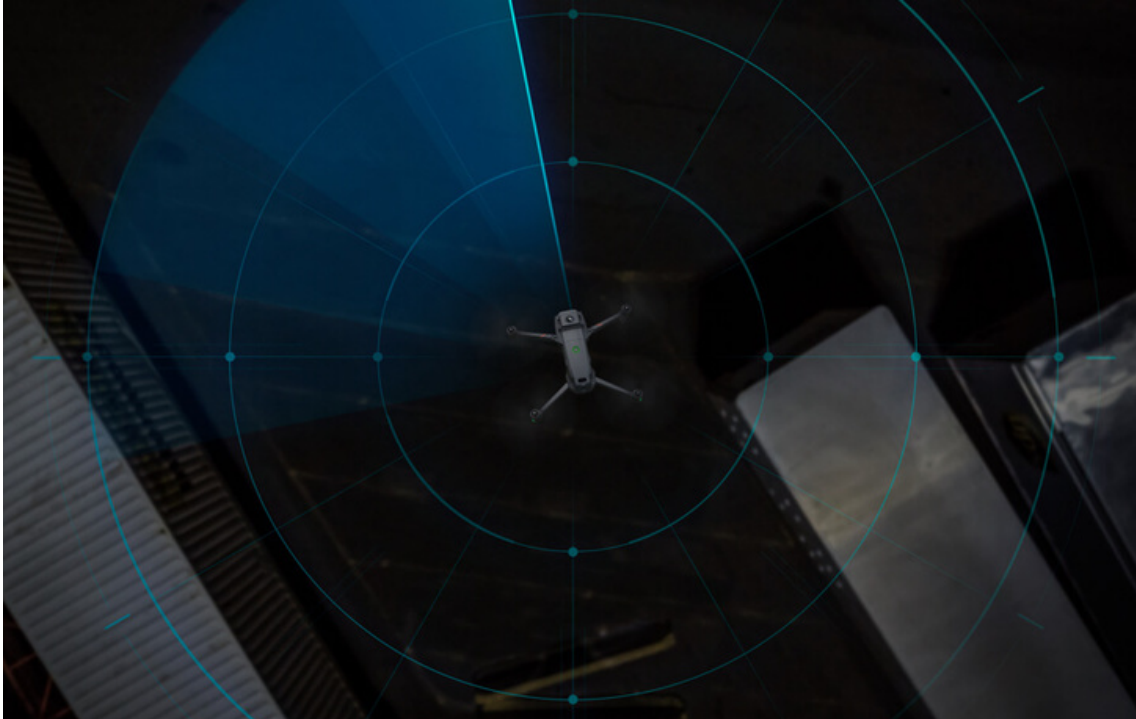
## Your In-Flight Safety. Our Top Priority.

From take-off to landing, we've refined the way you interact with your drone and the environment, ensuring you have a safe and productive flight at all times.



## Your Aircraft and Data. Under Your Control.

Simply enter your password to get access to your device and all of its features and functions. This intuitive way of logging in to your device ensures secure access to your drone and its onboard data storage, thus preventing leakage of sensitive information.



## Always in the Know of Your Immediate Airspace.

Avoid hazards in the sky with DJI AirSense, which enhances your airspace safety by giving you instant real-time positioning alerts on nearby manned aircraft.



## Fly Safer Than Ever.

Improved FlightAutonomy gives you omnidirectional obstacle sensing<sup>2</sup>, an advanced sensing system comprised of 8 high resolution vision and 2 infrared sensors placed on the sides of the aircraft. The result? A powerful set of sensors that determine the relative speed and distance between the aircraft and an object, so you can fly and hover with more stability than ever in a wide range of open and complex environments.



## Sense and Avoid with Ease.

The Advanced Pilot Assistance System<sup>3</sup> enables the drone to intuitively detect objects on its every move, letting you easily fly around or over obstacles, particularly in tight spaces.





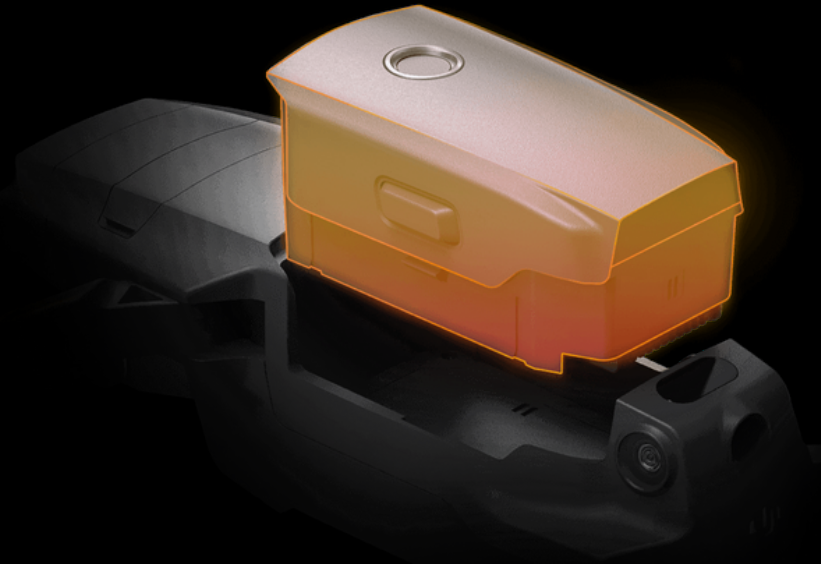
## Refined Imaging for Tactical & Practical Use.

The imaging system has been developed with two goals in mind; assisting pilots in close-range missions; and ensuring captured data is more relevant and trusted than ever.



## Foldable. Compact. Portable.

At 905g the mavic 2 Enterprise is rapidly foldable and swiftly in the side of your belt package, giving you instant power that's easily accessible and transportable - wherever you operate.



## Self-Heating Batteries for Adverse Environments

Stay powered on in demanding climates with a suite of smart self-heating batteries that are capable of working in sub-zero temperatures.



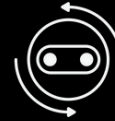
## Less Interference. Enhanced Transmission.

Experience sheer flying performance with OcuSync 2.0, which supports automatic dual frequency band switching<sup>4</sup>. This ensures a more reliable and stable flight, and enhanced video transmission of up to 8 km<sup>5</sup> at 1080p resolution.



## More Room for Your Missions.

With a 24 GB internal storage, you can now store a lot more data for your missions, allowing you to get more done without the constant need of transferring images manually over SD card.



## Move with Grace.


Swiftly maneuver through complex environments with a powerful propulsion system that boasts minimal sound, and offers extended flight time of up to 31 minutes and a maximum speed of 72 kph<sup>6</sup>.




## For Your Convenience.

For missions that require an unobtrusive flight, especially during the night, simply turn all the LED lights off, and go about your mission.



 Xboom Utilities  
#330, 27th Main, Sector 2,  
HSR Layout, Bangalore-560102

 Cloud No - 08061992438  
Landline - 080 2258 2616

 [www.xboom.in](http://www.xboom.in)

 [contact@xboom.in](mailto:contact@xboom.in)